

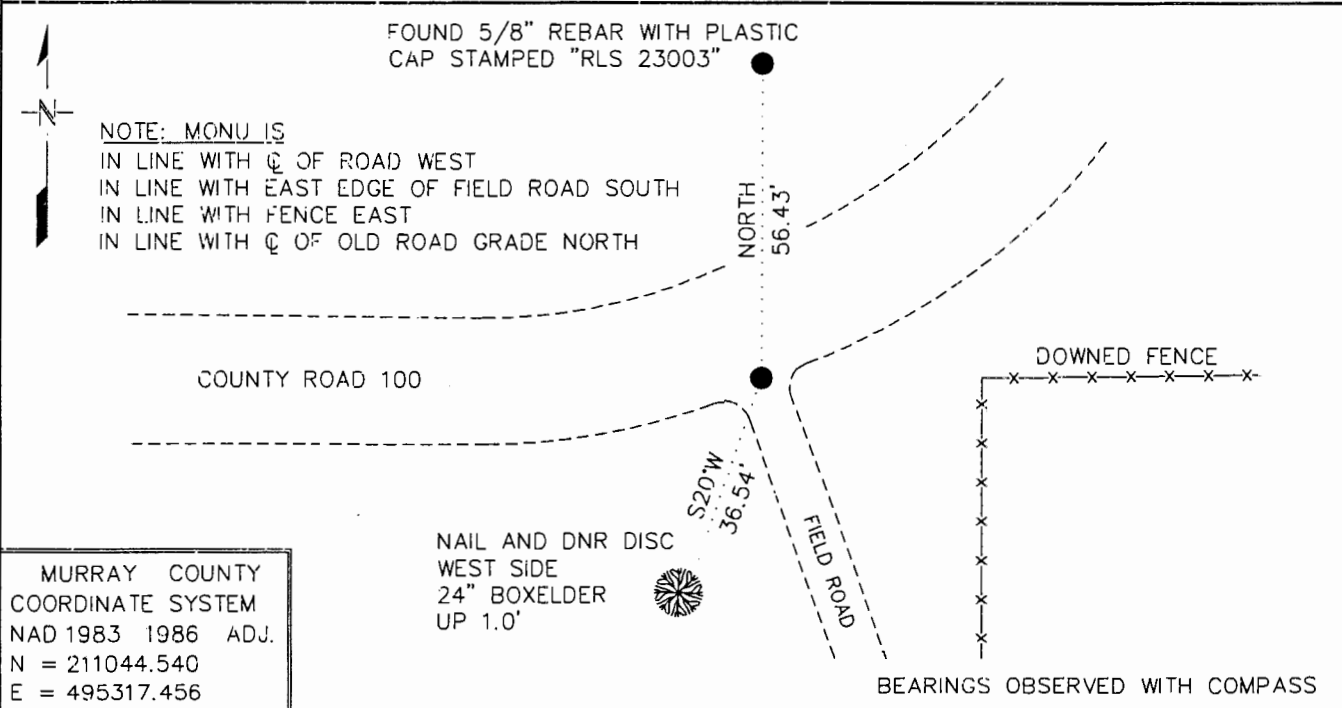
Index No.                      N-9

# CERTIFICATE OF LOCATION OF GOVERNMENT CORNER

NORTHEAST Corner of Section 20 , Township 108 N , Range 41 W  
5th Principal Meridian, State of Minnesota, County of MURRAY

At the corner location shown on the sketch:

- On 12/17/03 found a 1/2" INSIDE DIAMETER IRON PIPE WITH PLASTIC CAP  
DATE STAMPED "RLS 12967", DOWN 0.2'
  - left monument as found,       lowered monument,       removed monument (explain)
- On                      Placed a                       
DATE



MURRAY COUNTY  
 COORDINATE SYSTEM  
 NAD 1983 1986 ADJ.  
 N = 211044.540  
 E = 495317.456

Statement of evidence for this corner location is on back of this page.

JUNE 2004  
 WAS00473.00.00.01

I certify that this document was researched and prepared by me or under my direct supervision.

SIGNATURE Bruce W. Sheppard      DATE 6-29-04      License Number 17003  
 Title:       Land Surveyor       Professional Engineer       County Surveyor       County Engineer

The DNR Division of Lands and Minerals contacted the following for survey information:

Minnesota Secretary of State's Office  
Murray County Recorder's Office  
Murray County Highway Engineer's Office  
Zieske Land Surveying, Inc. of Windom  
B & G Land Surveys, Inc. of Redwood Falls  
Moseng Land Surveying of Marshall  
Madsen Land Surveying, Inc. of Fairmont

- 1854 U.S. General Land Office notes, obtained from the Secretary of State's Office, show the corner marked with a wood post and a deposited charred stake in a raised mound with a trench as per instructions.
- 1915 June, Surveyor's Record Book A, page 276, obtained from the County Recorder's Office, contains a survey by J.R. Johnston, County Surveyor. Survey states:  
"stone, with L cut in it, in road, relocated by testimony of J.R. Johnston and others"  
The corner is shown:  
2632.5 feet from the north quarter corner of Section 20  
5265.0 feet from the northwest corner of Section 20
- 1967 August 18, the DNR Survey Unit found a stone with a 'X' on top down 0.1 of a foot at corner. The following ties were taken to corner:  
bottle cap on the northwest side of an 8" Willow, west-southwest, 48.55 feet  
bottle cap on the west side of the northerly gate post, south-southeast, 102.4 feet  
25.35 feet west of a north-south fence  
5 feet east of an old road grade south
- 1982 A Field Notebook tie page, by Gary Martin, LS 12967, obtained from Madsen Land Surveying, Inc., states that a domed stone with a chiseled 'X' on top was found down 28 inches below the gravel at corner. Also, found a ¼ inch square top bolt with a chiseled 'X' on top painted orange lying on its side along the stone. A ½ inch rebar was set over the stone and the following ties were taken to it:  
in line with the easterly extension of the center line of County Road 100 west  
in line with fence line extended from the east  
in line with the center line of old road north and south  
brass tag and nail in corner fence post, North 86° East, 26.86 feet  
brass tag and nail in 8" Boxelder, North 9° West, 61.96 feet  
brass tag and nail in 12" Cottonwood, South 8° West, 37.15 feet
- 2003 January, a Certificate of Survey in Government Lot 2 of Section 17, obtained from Zieske Land Surveying, Inc., and signed by Perry L. Zieske, LS 23008, shows that a capped iron stake over a stone was found at corner.
- 2003 December 17, the DNR Division of Lands and Minerals found a ½ inch inside diameter iron pipe with a plastic cap stamped "RLS 12967" down 0.2 of a foot at corner. Searched for but did not find the 1967 ties. Did not search for the 1982 ties. The iron pipe was found to be:  
in line with the easterly extension of the center line of County Road 100 west  
in line with a fence east  
in line with the center line of an old road grade north

Accept the ½ inch iron pipe, which was set over a stone with a chiseled 'X' on top as the location of the corner as established in 1915.